



ATHENA 2010

Setting up ATHENA tool palettes

1) Basic principles

Our example palettes were produced with ATHENA 2010 under AutoCAD 2007. They work without restriction with ATHENA 2010 under AutoCAD 2007, 2008, 2009, 2010 and AutoCAD Architecture / Mechanical 2007, 2008, 2009, 2010 under their AutoCAD profile. There are restrictions under the application profiles of Architecture and Mechanical. For example, under the ADT profile no palettes can be imported or exported. The tool palettes represent an advantage for our users as a further alternative in the operation of ATHENA.

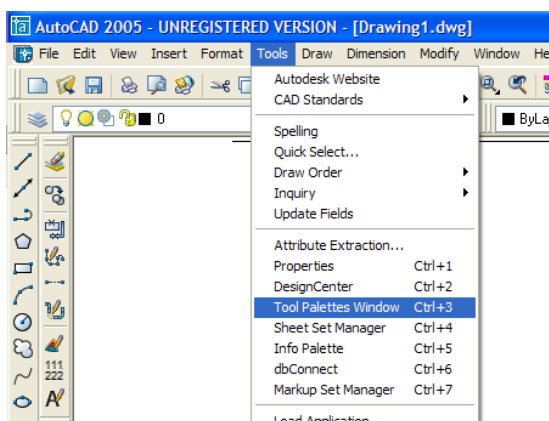
2) AutoCAD version

ATHENA 2010 supports AutoCAD versions 2007, 2008, 2009, 2010 as well as Autodesk Mechanical and Autodesk Architecture in the versions 2007, 2008, 2009 and 2010. Palettes are supported completely by all these AutoCAD versions.

3) Setting up the palettes

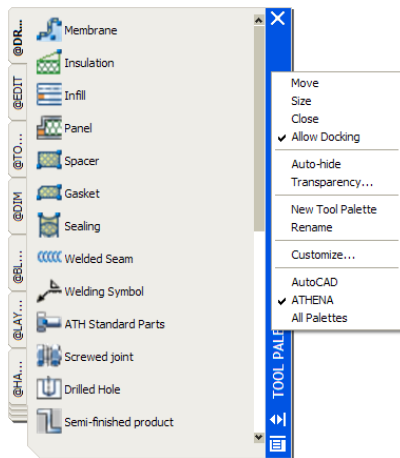
The description applies to ATHENA 2010 under AutoCAD 2008; with other AutoCAD versions the dialog boxes and options may differ.

To switch the tool palettes on or off you must click *Extras -> Palettes -> Tool palettes* in the AutoCAD pull-down menu. Alternatively, you can switch the palettes on and off also via the key combination *Ctrl+3* (3 on the main keyboard field, not the numeral block...):





When you switch on the palettes for the first time, generally the freely floating tool palette is superimposed somewhere on the screen.



Freely floating AutoCAD tool palette.

You can move this palette and change its length and width by accessing the title bar. A right click on the title bar of the palette opens up various options. I will describe a few options here; the significance of the rest should be self-explanatory or they can be found in the AutoCAD Help.

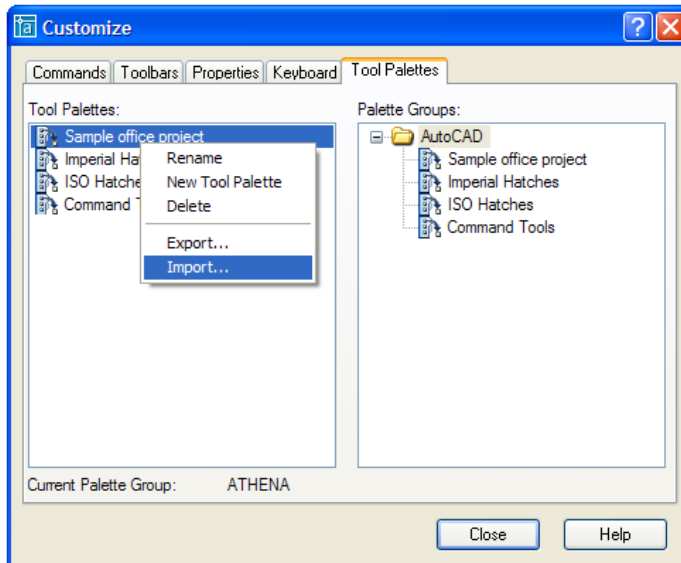
- **Allow docking:** If you tick this option, the palette latches onto the edge of the screen when you move there.
-> Supplementary option Anchor right / Anchor left (only works when "**Allow docking**" is ticked).
- **Auto hide:** If this option is ticked, the palette minimizes down to the title bar when you are not located on the palette with the crosshair. When you move onto the title bar with the crosshair, the palette opens up and you can click the tools.
- **Transparency:** If you click here, you can set the level of transparency of the palette. Normally, the palettes are opaque, but with this option they become transparent so that the drawing can be seen through the palette.
- **Customize commands:** Opens the CUI. Here you can select AutoCAD and ATHENA commands and place them on a palette and create new palettes.
- **Customize palettes:** Opens the dialog box Customize palettes. Here, all palettes are listed in the left window and all palette groups in the right window. You can thus import and export palettes. Furthermore, you can create palette groups and group palettes within them and activate them or switch them off.



3.1) Importing the ATHENA tool palettes

To load the ATHENA tool palettes you must, as shown above, first switch on the AutoCAD tool palettes. Then give a right click in the title bar where you select "**Customize palettes**". Alternatively you can call Customize palettes also via the pull-down menu *Extras -> Customize -> Tool palettes*.

The following dialog box appears in which all the palettes and palette groups are listed.



Dialog box Customize tool palettes.

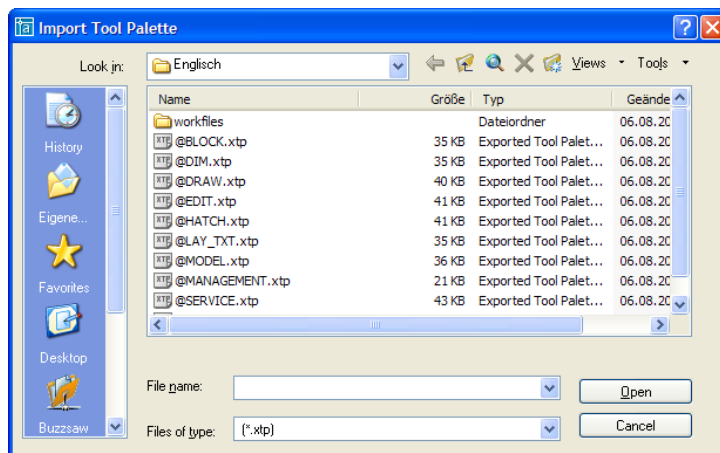
The left column lists all palettes, the right column the palette groups. To import the ATHENA tool palettes give a right click in the left column "Palettes". Here, an options window then appears where you can select "Import".

Browse here to the folder where the palettes are saved which you would like to import.

Generally, our example palettes are saved in

<C:\Programme\CAD-PLAN\2010\ATHENA\Sample\Toolpalettes\English\>.

Here select the chosen palette and then click on open.

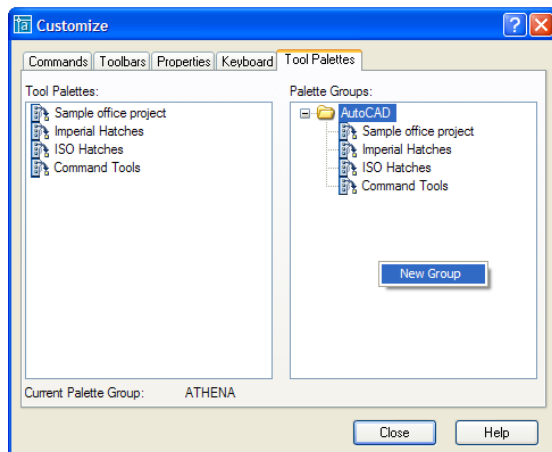




Unfortunately, you can only choose one palette each time. To import several palettes you must repeat this process as often as necessary.

⇒ *If you want to import many palettes at once a faster way is to import them by “drag & drop”. See Flash movie on the last page.*

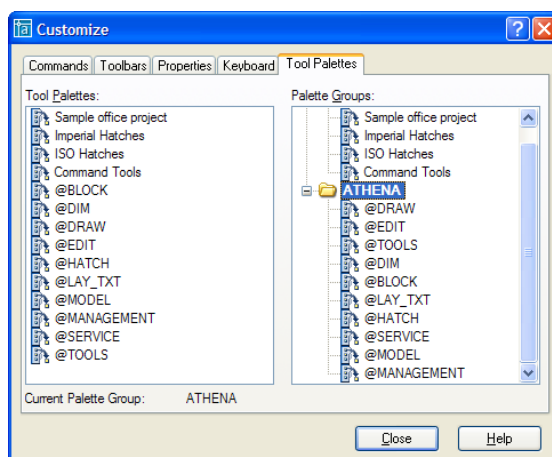
Once you have imported all ATHENA palettes, the dialog box should appear similar to this:



On the left side, in addition to the AutoCAD palettes, you can see the imported ATHENA palettes. With the prefix "@" on the palette designation you can easily recognize the ATHENA palettes.

On the right side are the palette groups. If you give a right click here, you can create a new group. Importing and exporting palette groups has little benefit, because only the name is transferred, not the content of a group.

With "New group" you can for example create a group "ATHENA" and save the ATHENA palettes there by clicking on the palette and with the mouse key pressed dragging it into the right window under "ATHENA":



You can create any number of groups and also produce subgroups. Here, you can also combine AutoCAD and ATHENA palettes mixed in one group.



The order of listing the palettes in the group also determines the order in which they are displayed on the screen. To change the order you must click on the palette name and move it with the mouse key pressed.

The palette groups and subgroups have the function of displaying a selection of the palettes on the screen.

If you right click on "ATHENA" and select "Set as current", only the palettes contained in the group ATHENA and all subgroups are displayed on the screen.

Please note: If you want to delete a palette group, that only works when it is not current.

You can have the palettes freely floating on the screen, dock them permanently at the edge or anchor them with the option "Anchor right / left" to the right or left edge of the screen so that the palettes automatically mask out and only open up on moving over them with the mouse.

Freely floating palettes can be placed anywhere on the screen. The width and height can be stretched as required via grips at the sides and corners. If the option "Auto-hide" is set, the palette is masked out when the crosshair is not over it and it opens up when the mouse is moved over it again.

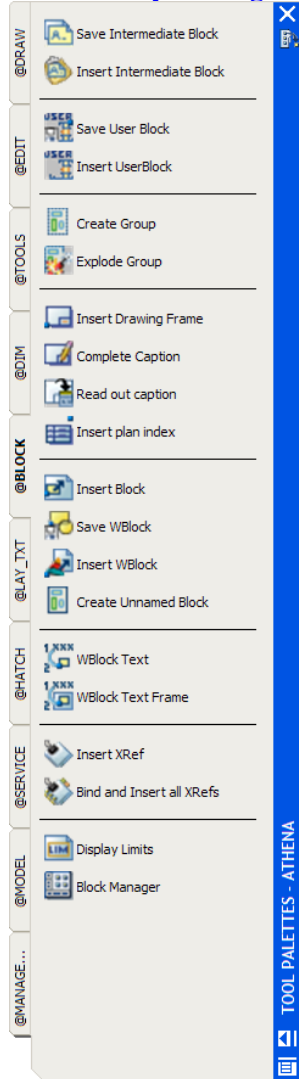
If the option "Allow docking" is not activated, then the palettes can also be moved to the edge without them docking there. => **not recommended, because the whole day is spent moving palettes to the side because the drawing is hidden.**

Permanently anchored palettes dock to the right or left edge of the screen and always remain opened up. The palette can always be seen and the position of the commands is easily remembered. => **recommended for widescreen monitors; a 24", 27" or 28" widescreen is ideal. 30" is also very good, but less advantageous from a price / performance viewpoint.**

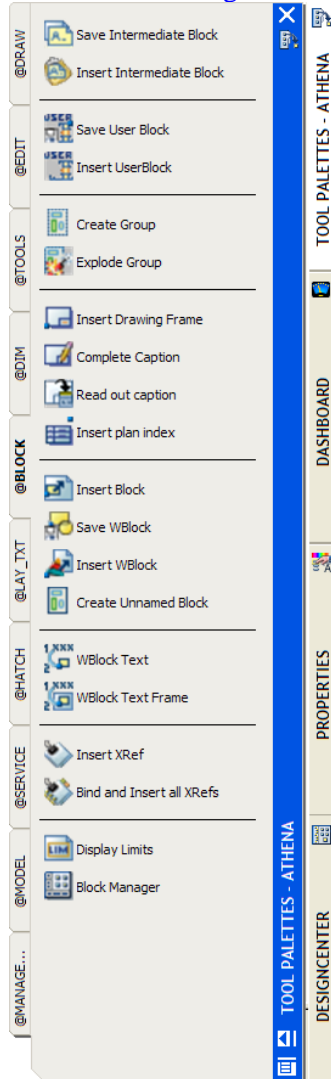
Anchor right / left is a mixture of the two above forms: The palettes dock at the right and / or left edge of the screen and are masked out. They open up when the mouse is moved over them.



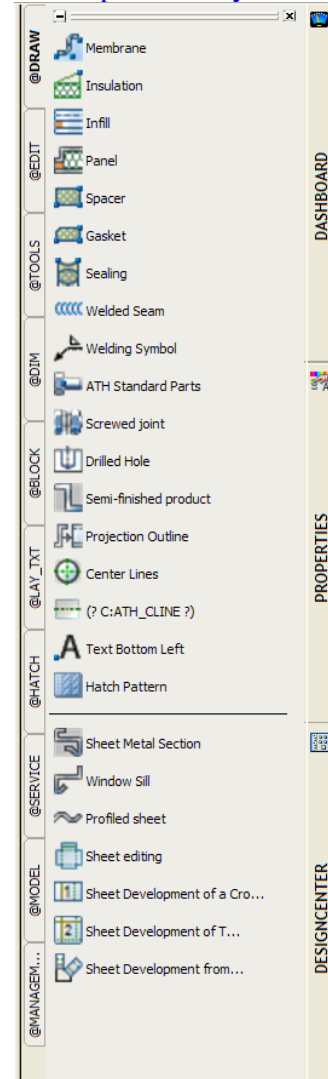
Palette freely floating



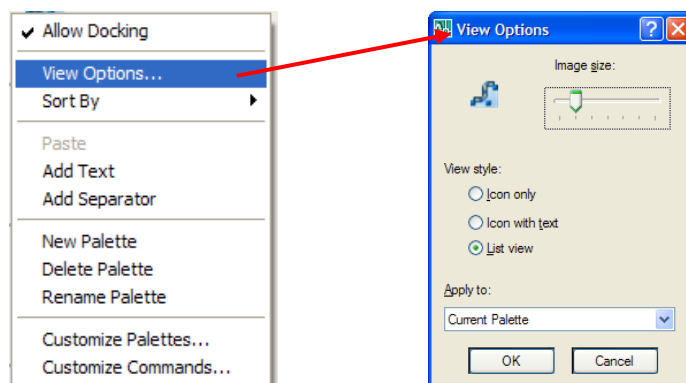
Palette "Anchor right"



Palette permanently anchored



If you find the icons too large or too small, you can change them as follows:
Give a right click on a palette on the screen. An option box then appears in which you can click "View options". In the view options you can change the image size of the icons with a slide control and select whether the commands are illustrated as an icon, icon with text or as a list view. You can only apply your changes to the current palette or to all palettes.





Import many palettes at once

With the AutoCAD import command you can only import one palette after the other. If you want to import more than one palette simply pull them with drag & drop from the Explorer window to the AutoCAD window. This will import all palettes into the current toolpalette group:

